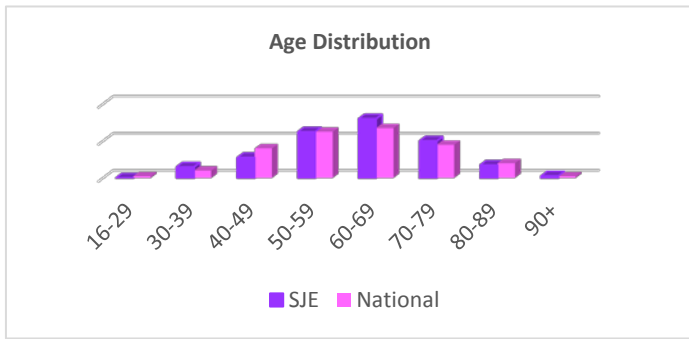


2017 Outcomes Report, St Joseph Hospital Cancer Committee
Utilizing 2016 Data

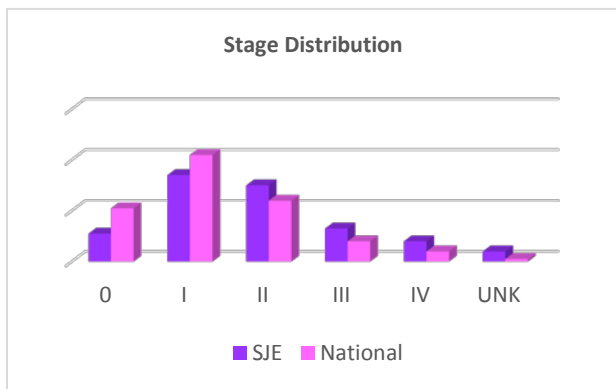
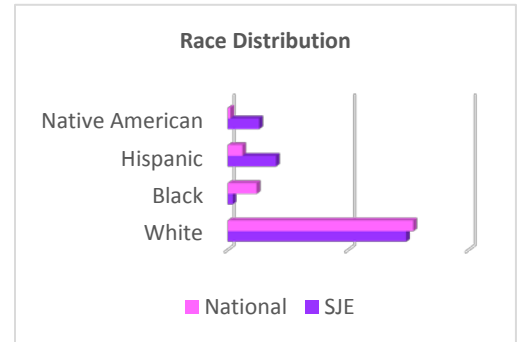


SJE reflects a moderately older population with breast cancer over the national comparison, however this is consistent with the local age demographics.

	SJE	National
16-29	0%	1%
30-39	6%	4%
40-49	11%	16%
50-59	25%	25%
60-69	32%	27%
70-79	20%	18%
80-89	7%	8%
90+	1%	1%

	SJE	National
White	74%	77%
Black	2%	12%
Hispanic	20%	6%
Native American	13%	1%

SJE has a significantly higher proportion of Native American patients, however this is consistent with the SJE geographic population.



Local data notes a slightly higher proportion of late stage disease over that of the national comparison.

	SJE	National
0	11%	21%
I	34%	42%
II	30%	24%
III	13%	8%
IV	8%	4%
UNK	4%	1%

First Course of Treatment

	SJE	National
None	16%	10%
Surgery Only	18%	16%
Chemotherapy Only	4%	1%
Surgery and Radiation	10%	8%
Surgery and Chemotherapy	8%	5%
Surgery and Hormones	11%	14%
Surgery, Radiation and Chemotherapy	10%	7%
Surgery, Radiation and Hormones	12%	22%
Surgery, Chemotherapy and Hormones	2%	5%
Surgery, Radiation, Chemo and Hormones	9%	12%

NCCN Guideline

Estrogen Receptor (ER)/Progesterone Receptor (PR)/Human Epidermal Growth Factor receptor 2 (HER2) negative (triple negative) receptor status.

Due to the high recurrence and poor outcomes for patients with triple negative (ER/PR/HER2) receptors, management strategy includes chemotherapy administration with surgical excision. The preferred modes is that of neoadjuvant timing.

For the 2016 Breast cases at SJE, 3%/1 case was ER/PR/HER2 receptor negative (triple negative) and refused all chemotherapeutic forms, neoadjuvant (preoperative) chemotherapy or post-operative chemotherapy.

2017 Assessment of Evaluation and Treatment Planning Breast Cancer

STUDY PURPOSE: To assess if Breast cases diagnosed and treated at SJE have a diagnostic biopsy prior to surgical resection based on NCCN guidelines.

Member of Cancer Committee to perform study: M. Ellen Mahoney, MD/Fred Wacker, Ph.D., CTR

Background:

The study conducted by Cancer Committee this year analyzed the diagnostic workup of breast patients compared to the NCCN (National Comprehensive Cancer Network) Version 1.2017.

Study Criteria: Site Specific Sample based on identified need or concern:

Site Specific Sample:	Breast Cancer
Accession Year:	2016, Class of Case 00-22 (analytical)
Focus on AJCC Clinical Stages:	Stage Groups 0-3, Stage 4 Distant excluded

Total cases: 90

Data reviewed for each case included are patients age, diagnostic workup, clinical stage, pathological stage and first course of treatment documented in the Cancer Registry (CR) abstract, and source pathological report, patient medical record.

Pathological Report documentation based on NCCN Guideline:

Clinical AJCC Stage 0-3 cases to receive a diagnostic breast biopsy prior to surgical intervention, BINV-1.

SJE Breast Cases: Study Assessment Summary:

Summary of Breast Cases:

A review of all of the Breast cases showed a total of 90 cases of breast cancer were accessioned by the SJE Hospital Cancer Registry, (11) Stage 0, (35) Stage I, (31) Stage 2, and (13) Stage 3 disease. 100% of patients in the study were female. 100% histologically confirmed diagnosis. Ages ranged at diagnosis from 32-96 with the median age at diagnosis being 63 years of age.

STUDY RESULTS:

Of the 90 cases all complied with the NCCN guideline for a 100% compliance rate.